

A CONNECTED
CHURCH



SEPA Synod Assembly

PRESENTER: JUDITH ROBERTS (SHE/HER)



Evangelical
Lutheran Church
in America



About Me....

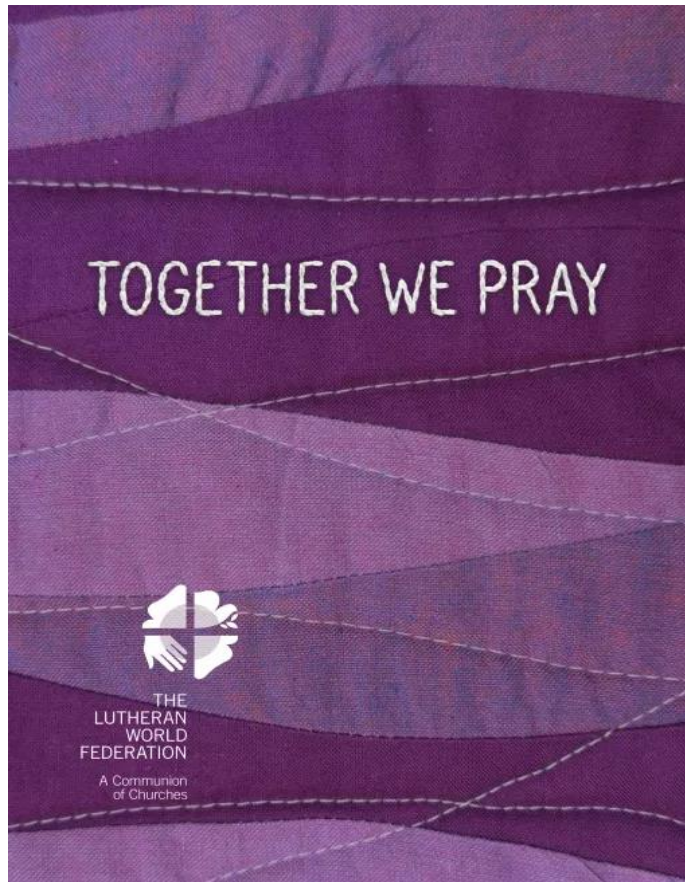
Confirmed at Christ the King Lutheran
Windsor, CT

Current member of Grace Lutheran
Hartford, CT

Favorite Bible Verse Romans 8:38-39



Free Online New Resource

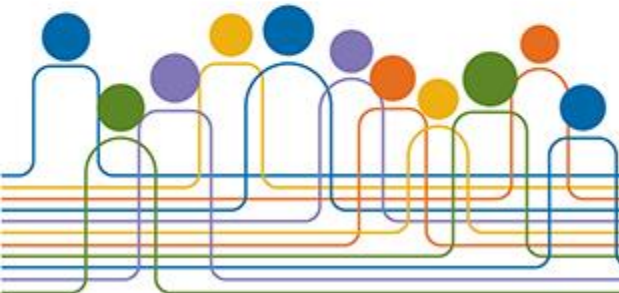


Together We Pray: women's prayer book

A new prayer collection written by women across the global Lutheran World Federation communion – Woven around the themes of the Lord's Prayer, this book celebrates the spiritual wisdom, resilience, and theological insights that women bring to the life of the church.

Available in English, Spanish, French, German

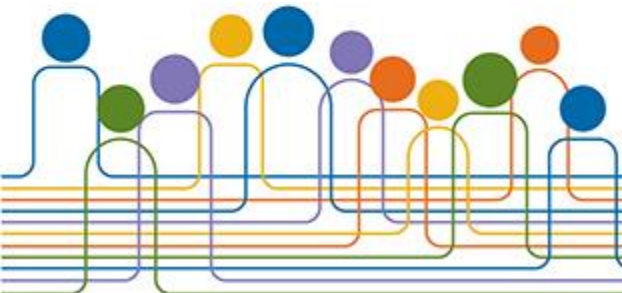
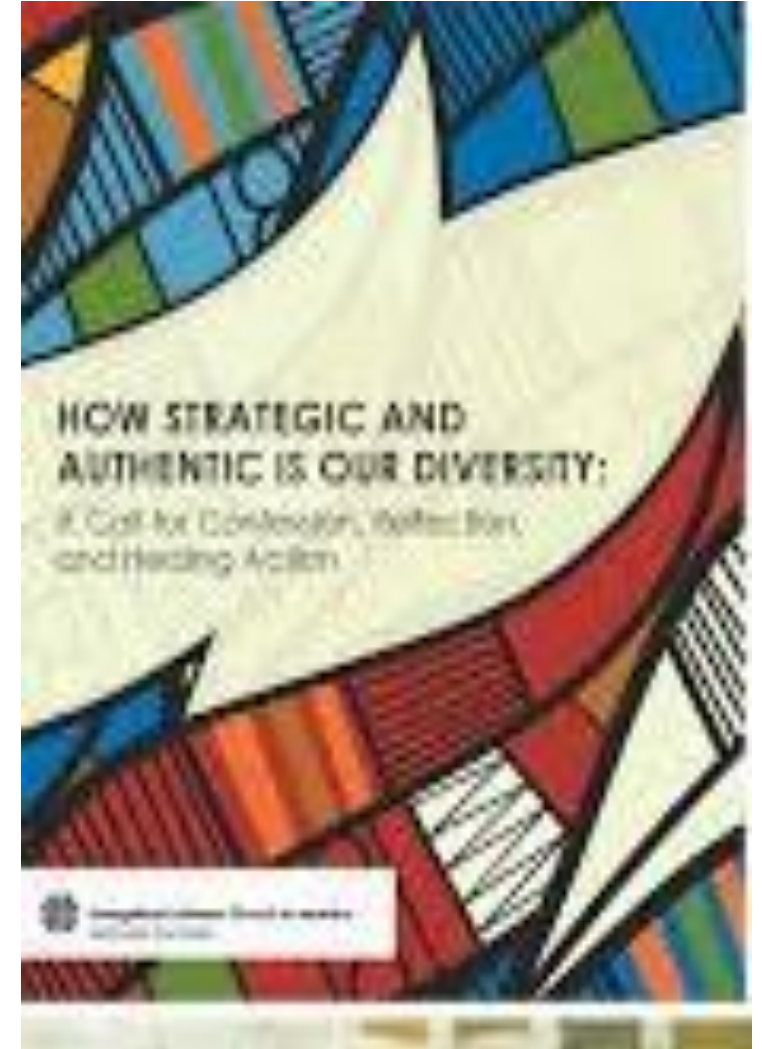
Visit: [The Lutheran World Federation | The Lutheran World Federation](#)



Commitments to Racial Ethnic Diversity

In response to the ELCA commitment to increase racial, ethnic diversity, the 2019 Church Council affirmed the Strategy Towards Authentic Diversity document and the formation of a task force to implement its recommendations.

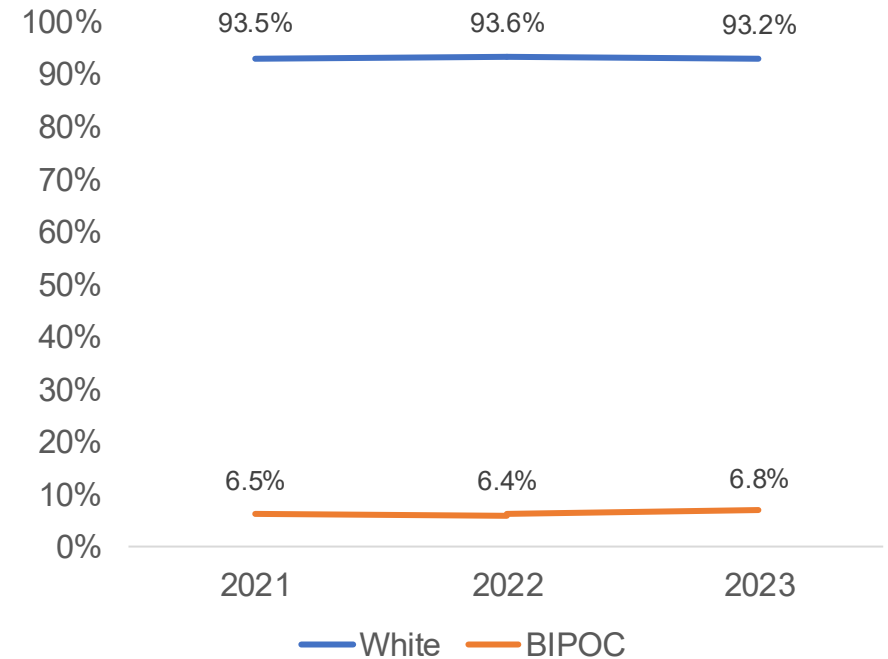
The ELCA's commitment to authentic racial and ethnic diversity and anti-racism continues through various Ministries Among Diverse Culture and Communities, ethnic associations and racial justice ministries. These efforts aim to confront racism and build a more multicultural church.



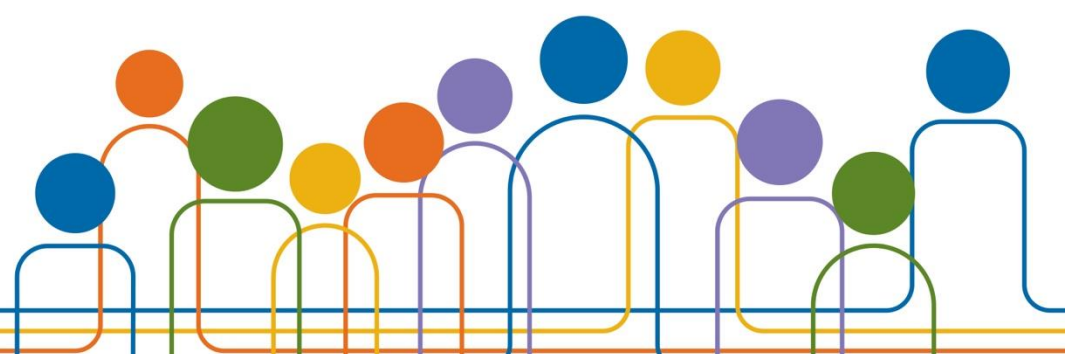
Change in the proportions of active participants

Another metric of interest is the proportion of all active participants in ELCA congregations who identify as People of Color (POC). According to the data that 5% of those who identify with ELCA are People of Color. gathered through the ELCA Annual Congregation Report, in 2021, this proportion was 6.5% of active participants. In 2023, it increased slightly to 6.8%.

These data show trends similar to those reported by the Pew Research Center. In data collected in 2023-24, Pew indicated



A CONNECTED CHURCH



JANUARY 20

NATIONAL DAY OF

RACIAL HEALING

PRESENTERS

#HOWWEHEAL



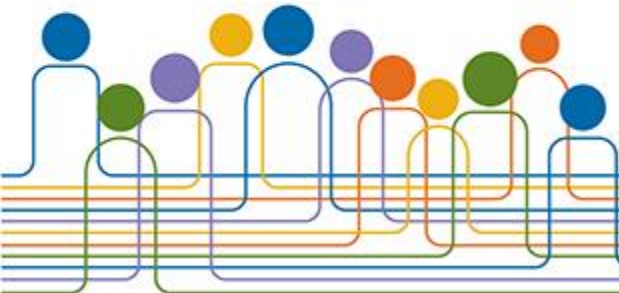


The November 2024 Church Council approved the recommendations to chapter 5 of the ELCA constitution to incorporate language and definitions that reflect, diversity, equity, inclusion and accessibility and also increase representational goals of historically unrepresented groups.

5.01.H24. This church is dedicated to fostering a diverse, equitable, inclusive, and accessible environment that honors the diversity of God's creation so that as many people as possible have the opportunity to participate fully in the life and work of this church.

This church commits to working to intentionally lift up voices from historically underrepresented groups in its assemblies, councils, committees, boards, and other organizational units.

- While specific identities are listed below, this church recognizes that humans have multiple aspects of their identities that are tied to systemic privilege and oppression that shape the lives of individuals and communities in distinct ways.
- For all purposes in this church's governing documents, historically underrepresented groups shall be understood to include the following:
 - a. Persons of color and/or persons whose primary language is other than English;
 - b. Persons of diverse gender identities and persons of diverse sexual orientations;
 - c. Persons experiencing poverty or persons of lower income;
 - d. Persons living with disabilities;
 - e. Persons who are not natural-born United States citizens



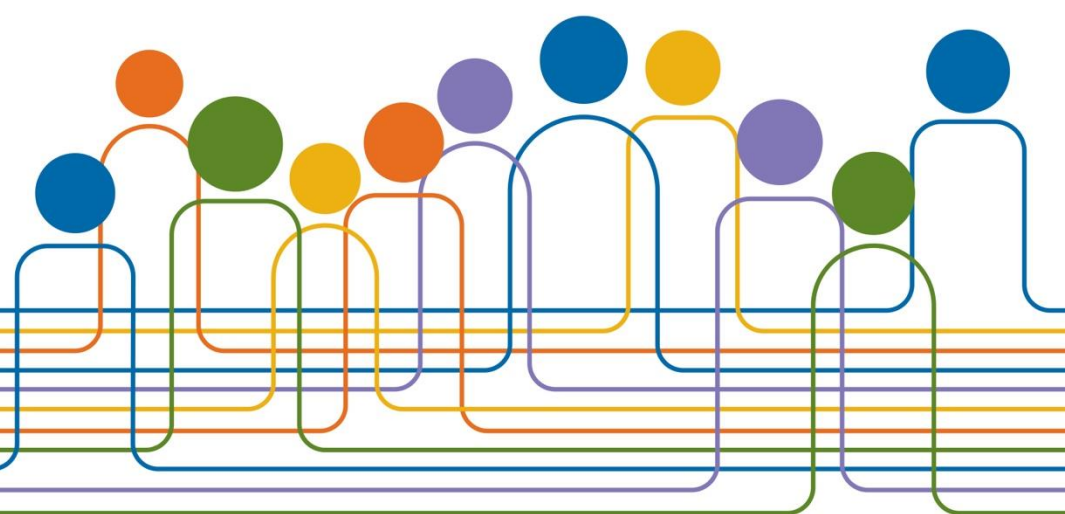
A CONNECTED CHURCH



Motion D (530-236): Amending bylaw 5.01.E19. to increase the percentage goal of youth and young adult voting membership of Churchwide Assembly, Church Council, and churchwide boards and committees from 10 to 20%.



A CONNECTED CHURCH



What's Next for the ELCA?



ELCA Vision Statement:

A world experiencing the difference God's grace and love in Christ make for all people and creation.

Congregations



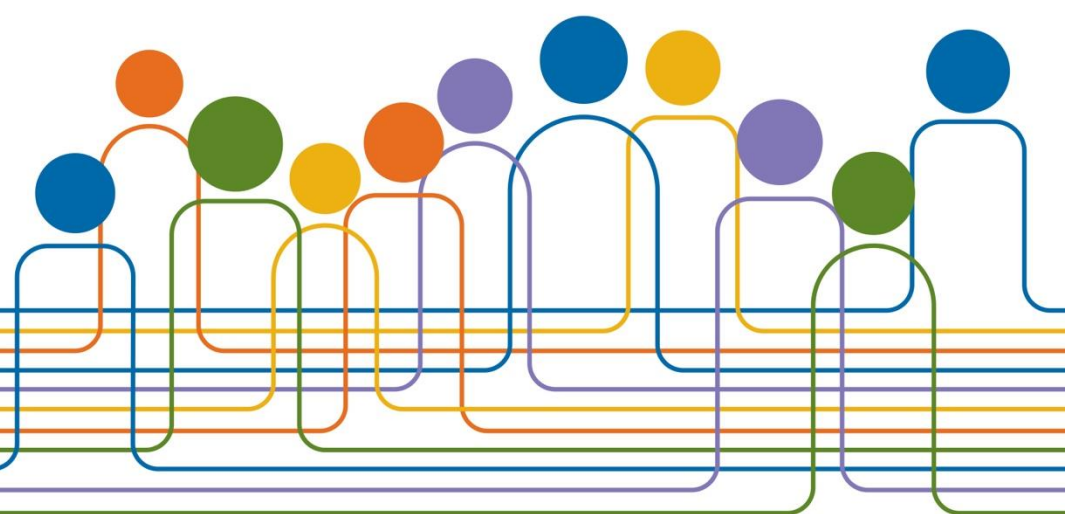
Synods



Churchwide Organization



A CONNECTED CHURCH



Return on Investment

Western U.S. – Rock Point, Arizona

Navajo Evangelical Lutheran Mission





Understanding *Faith and Civic Life*

A six-week study guide
on the ELCA's social
statement for
congregations and
communities

*A Collaboration of
Lutheran Advocacy Ministry in Pennsylvania (LAMPa)
and
Theological Ethics, Office of the Presiding Bishop*



Faith and Civic Life social statement

Learn more at
[ELCA.org/civicsandfaith](https://elca.org/civicsandfaith)



ELCA World Hunger

Last year, ELCA World Hunger worked in **58 countries**, including the United States, addressing the root causes of hunger and poverty.



Lutheran Disaster Response

Lutheran Disaster Response is our church's way of walking with communities impacted by disasters. In 2025, we served neighbors in **51 countries** including the United States. **Thank you!**





Evangelical
Lutheran Church
in America

MISSION SUPPORT



Connected, we're doing more than any one person, congregation or synod could do alone, making an impact and supporting ministry all around the world. **Thank you!**

Church Property Resource Hub

Resourcing Faith-driven Church Property Stewardship



COURSES &
RESOURCES



SUCCESS
STORIES



SUPPORT
FORUM

Learn more at [ELCA.org/CPRH](https://elca.org/CPRH)
or email CPRH@elca.org



Your Synod's Presence

PASTOR GWENDOLYN KING-- CHURCH COUNCIL

MS. JOY GRACE --COMMITTEE ON DISCIPLINE

DAMAR WILSON – SYNOD YOUNG ADULT NETWORK REPRESENTATIVE



Woven Together
ROSTERED MINISTERS GATHERING

JULY 6-9, 2026

**INDIANAPOLIS,
INDIANA**



Evangelical
Lutheran Church
in America



**We are members of one body in Christ,
called to love one another.**





Thank you!

Judith.Roberts@elca.org

773-380-2835







Thank you!



Central U.S. – Monument, Colorado and Mazomanie, Wisconsin

ELCA Ministry with Children Grants Program



Eastern U.S. – New York City, NY

Trinity Lutheran Church



Caribbean – Rio Piedras, Puerto Rico

Our House for All: A program serving students and neighbors of the University of Puerto Rico in Rio Piedras

